

Associated Talents, Inc.  
Coin Dot Baby Bunny BR-301



**Supply List**

**Associated Talents, Inc.**  
BR-301 Coin Dot Baby Bunny

**Access Commodities**  
*Accentuate MMA*  
#332  
#303

**The Caron Collection**  
*Impressions*  
#5045 Lime Green

**Kreinik**  
#4 Braid  
#014 Sky Blue  
#5760 Marshmallow

**Miyuki Corporation**  
*11/0 Delica Beads*  
#DB0051 Transparent Rainbow  
Crystal  
#DB0855 Matte Transparent  
Rainbow Orange

**Rainbow Gallery**  
*Mandarin Floss*  
#M859 Golden Yellow

*Petite Sparkle Rays*  
#PS26 Pink  
#PS56 Lite Aqua

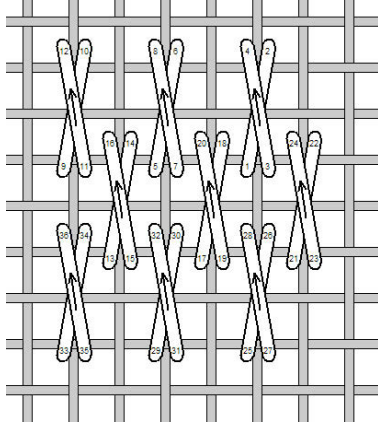
*Petite Silk Lame Braid*  
#SP30 Orange  
#SP109 Medium Raspberry  
#SP112 Spring Green

**Area:** Background  
**Thread:** 2ply Impressions  
#5045  
**Stitch:** Basketweave

# Associated Talents, Inc.

## Coin Dot Baby Bunny BR-301

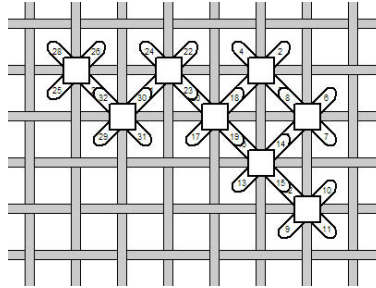
**Area:** Body Background  
**Thread:** #4 Braid #5760  
**Stitch:** Staggered Cross



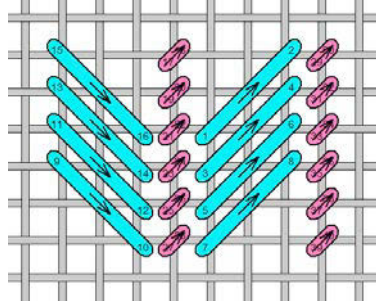
**Area:** Dots  
**Threads:**  
 Lime~Petite Silk Lame #SP112  
 Lavender~4ply Accentuate  
 MMA #332  
 Yellow~4ply Accentuate MMA  
 #10057  
 Orange~Petite Silk Lame #SP30  
 Aqua~#4 Braid #014  
 Pink~Petite Silk Lame #SP109  
 All~ 11/0 Delica #DB0051

- Technique:** Skip Tent Beading
- Starting on the upper right thread intersection, come up in the lower left hole, go through the bead, then back down in the upper right hole.
  - Next, come up in the lower right hole, go back through the bead from the bottom (facing the lower left hole) and then go back down in the upper left hole. The bead will sit with the hole running vertically.
  - Continue to apply beads, skipping every other thread intersection.
  - *TIP: If your first bead is applied on a vertical thread, all beads will be applied on a vertical thread. If on a*

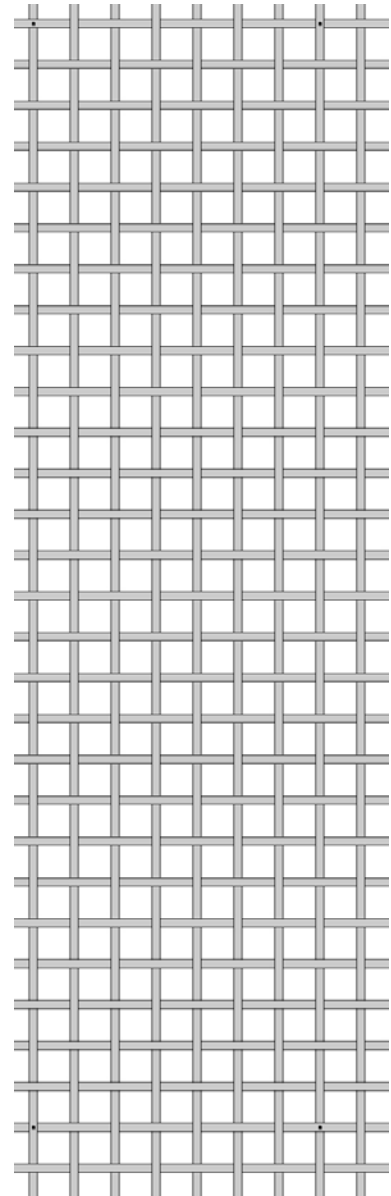
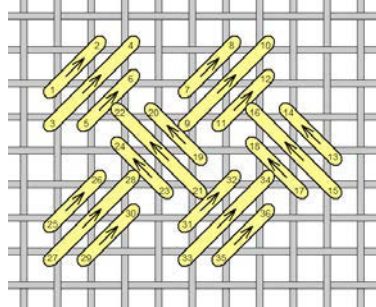
*horizontal, all will be on a horizontal thread.*



**Area:** Aqua Ear and Tail  
**Threads:** Petite Sparkle Rays  
 #PS26, #PS56  
**Stitch:** Reversing Diagonal  
 Satin Stitch with Tent



**Area:** Yellow Ear  
**Threads:** 4ply Mandarin Floss  
 #M859, 11/0 Delica #DB0855  
**Stitch:** Criss Cross Hungarian



*Graphs are for representation of the rhythm of a stitch, and may not fit the specific, painted area. Unless otherwise instructed, the stitches should be compensated to fit the painted area, appropriately.*

*Appropriate substitutions should be made for any beads and/or embellishments that may have been discontinued.*