

Associated Talents, Inc.
Santa Plaid Tree CT-1610



Supply List

Associated Talents
CT-1610

DMC Corporation
Memory Thread #6020

Fleur de Paris
Bella Lusso White

Kreinik
1/16th Ribbon #005
#12 Braid #002

Mill Hill
Magnifica Beads #10009,
#10045
Rainbow Gallery
Crystal Braid #CR01
Flair #F508
Fyre Werks #F38
Neon Rays+ #NP22
Soft Sheen Fyre Werks #FT27
Splendor #S972
Petite Treasure Ribbon #PR88

Area: Light Green in Plaid
Fiber: Petite Treasure Ribbon
#PR88
Stitch: Reversing Scotch

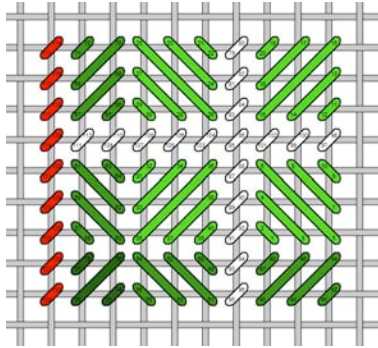
Area: Medium Green in Plaid
Fiber: Splendor #S972
Stitch: Reversing Cashmere

Area: Dark Green in Plaid
Fiber: Soft Sheen Fyre Werks
#FT27
Stitch: Reversing Mosaic

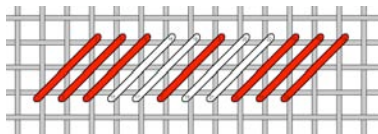
Associated Talents, Inc.

Santa Plaid Tree CT-1610

Area: Red and White in Plaid
Fibers: Neon Rays+ #NP22,
 Crystal Braid #CR01
Stitch: Continental



Area: Candy Cane Borders
Fibers: Crystal Braid #CR01,
 Neon Rays+ #NP22
Stitch: Diagonal Satin



Area: Gold Lines
Fiber: #12 Braid #002
Stitch: Continental

Area: Santa Hat and Suit
Fibers: Fyre Werks #F38, Neon
 Rays+ #NP22
Stitch: Basketweave

Area: Santa Belt
Fibers: DMC Memory Thread
 #6020, #12 Braid #002
Technique: Couched

- Open up the holes on either end of the belt.
- Plunge the Memory thread to the back on both ends.
- Secure to the back of the stitching.
- Couch in the center with the #12 Braid, both to form the belt buckle, as well as secure the Memory Thread.

Area: Santa Face and Hands
Fiber: Flair #F508
Stitch: Basketweave

Area: Santa's Hair
Fiber: Bella Lusso White
Stitch: French Knots

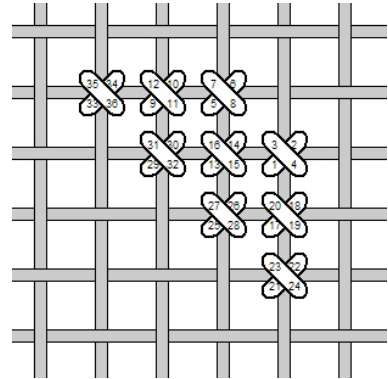
Area: Santa's Beard
Fiber: Bella Lusso White
Stitch: Extended French Knots

- Come up from the back at the top of the beard.
- Wrap your needle as you would for a French knot, but go back down at the bottom of the beard, rather than right next to where you came up.

Area: Presents
Fiber: Magnifica #10045
Technique: Basketweave Beading

- Starting in the upper right corner stitch, come up in the lower left hole, go through the bead, and back down in the upper right hole. The bead will now have a diagonal slant.
- If covering a **horizontal** thread, come back up in the upper left hole, go back through the bottom of the bead (entering the end nearest the lower left hand hole), and go back down in the lower right hand hole. This will "pull" the bead into a horizontal position.
- If covering a **vertical** thread, come up in the lower left hole, go through the bead, then down in the upper right hand hole (just as for a horizontal thread.) Then come back up in the lower right hand hole, go back through the bottom of the bead, and go back down in the upper left hand hole. This will "pull" the bead into a vertical position.

- You will move in the same manner as basketweave, on the diagonal rows.
- The graph illustrates the direction of the cross stitches, as well as the movement between beads.



Area: Bows
Fiber: #12 Braid #002
Stitch: Continental

Area: Black Background
Fiber: 1/16th" Ribbon #005
Stitch: Basketweave

Area: Snowflakes, Santa's Cuffs and Hat Trim
Fiber: Magnifica #10009
Technique: Vertical Direction Beading

- Apply beads with a cross-stitch, using the rhythm and technique for covering vertical threads in basketweave beading.