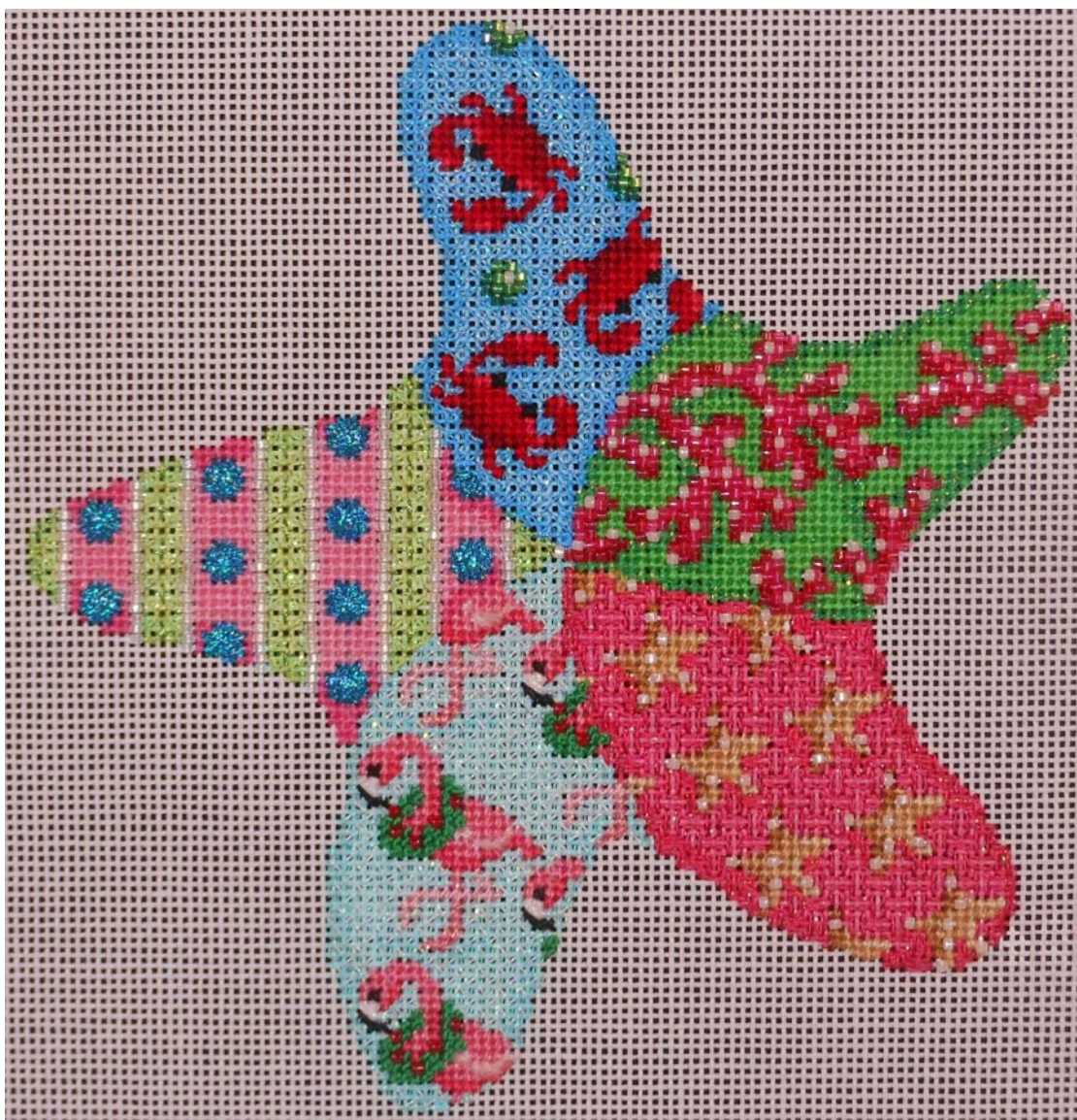


Associated Talents, Inc.  
Seaside Patch Starfish DL-761



**Supply List**

*Associated Talents, Inc.*  
DL-761

*Kreinik*  
#8 Braid #015  
#12 Braid #005, #092, #5760,  
#9200  
1/16th" Ribbon #029L

*Mill Hill*  
Magnifica #10009, #10065,  
#10067, #10106, #10114

*Miyuki Corporation*  
11/0 Delica #DB1308

*Point of It All Designs*  
Hyla's High Cotton #902, #903

*Rainbow Gallery*  
Fuzzy Stuff #FZ25  
Grandeur #G1016  
Petite Silk Lame #SP36, #SP45  
Petite Very Velvet #V602  
Sparkle Braid #SK06, #SK26  
Splendor #S972

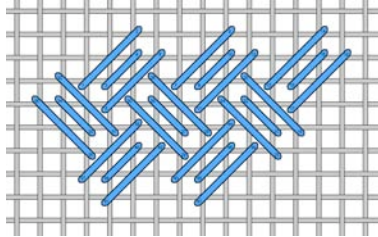
*Renaissance Designs*  
Sprinkles #50

*Vineyard Silk*  
Classic #C-007, #C-044,  
#C-134, #C-137, #C-183,  
#C-190, #C-211, #C-212

# Associated Talents, Inc.

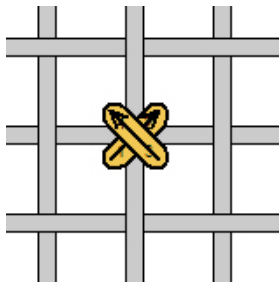
## Seaside Patch Starfish DL-761

**Area:** Blue Ground  
**Fiber:** Sparkle Braid #SK26  
**Stitch:** Woven Trellis



**Area:** Crabs  
**Fibers:** Vineyard Silk #C-007, #C-134, #C-183  
**Stitch:** Tent

**Area:** Crab Eyes  
**Fiber:** #12 Braid #005  
**Stitch:** Cross Stitch



**Area:** Green Dots  
**Fibers:** Magnifica #10009, #10065, #10067  
**Technique:** Basketweave Beading

- The first step, regardless of whether you are covering a horizontal or a vertical canvas thread is to come up in the lower left hand hole, go through the bead, then back down in the upper right hand hole. This is a classic tent stitch. The bead will slant from the lower left to the upper right, just like the stitch.
- When covering a horizontal thread, come back up in the upper left hand hole, go through the bottom of the bead (the end nearest the

lower left hand hole), and then go back down in the lower right hand hole. This will “pull” the bead into a horizontal position.

- Moving just like basketweave, continue to apply any beads covering horizontal threads in that diagonal row.
- When covering a vertical thread, follow the first step. For the second step, come up in the lower right hand hole, go through the bottom of the bead (again, the end nearest the lower left hand hole,) and then go back down in the upper left hand hole. This will “pull” the bead into a vertical position.
- Moving just like basketweave, continue to apply beads covering vertical threads in that diagonal row.
- You do not need to change the color of your beading thread as the color of the design changes, just change the color of the bead you apply.
- Once an area is completed, you might need to “scoot” the beads on the outer edges towards the center for tightly packed coverage.

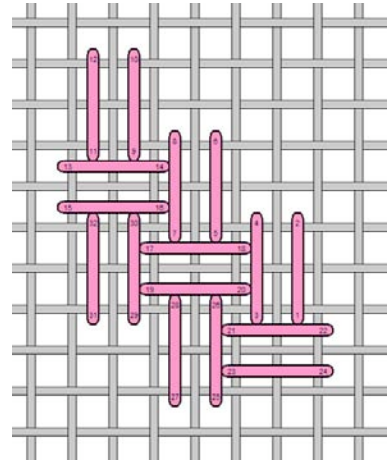
**Area:** Green Background  
**Fibers:** Sprinkles #50, Splendor #S972  
**Stitch:** Tent

**Area:** Coral  
**Fibers:** Magnifica #10009, #10106; Miyuki 11/0 #DB1308  
**Technique:** Basketweave Beading

**Area:** Starfish  
**Fibers:** Vineyard Silk #C-044, #C-137, #C-190  
**Stitch:** Tent

**Area:** White Dots on Starfish  
**Fiber:** Magnifica #10009  
**Technique:** Apply beads with a cross-stitch

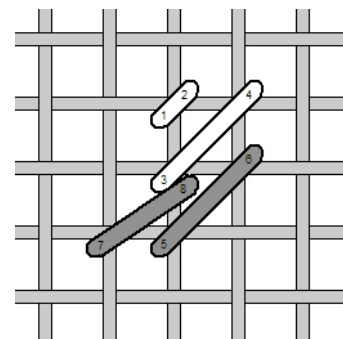
**Area:** Pink Ground  
**Fiber:** Petite Silk Lame #SP45  
**Stitch:** Lazy Roman Variation



**Area:** Flamingoes  
**Fibers:** Vineyard Silk #C211, #C212  
**Stitch:** Tent

**Area:** Flamingo Legs  
**Fibers:** #12 Braid #092, #9200  
**Stitch:** Tent

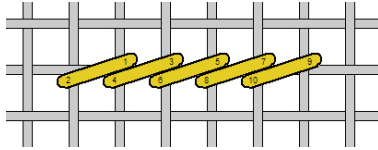
**Area:** Beak and Eyes  
**Fibers:** #12 Braid #005, #5760  
**Stitch:** Cross-stitch and Beak Variation



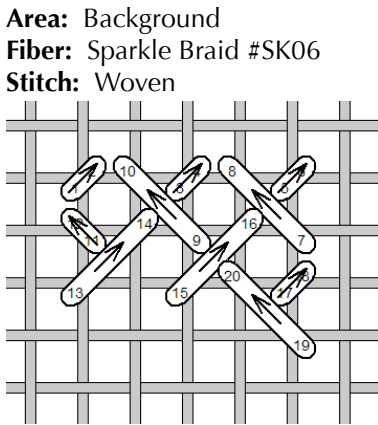


Associated Talents, Inc.  
**Seaside Patch Starfish DL-761**

**Area:** Wings  
**Fiber:** Fuzzy Stuff #FZ25  
**Stitch:** Encroaching Goebelin

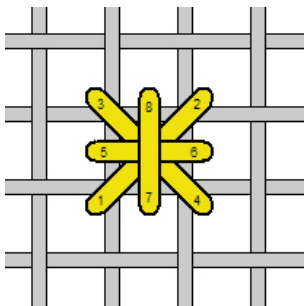


**Area:** Wreath  
**Fibers:** Grandeur #G1016;  
 Magnifica #10114  
**Stitch:** French Knots; Apply  
 beads with a cross-stitch

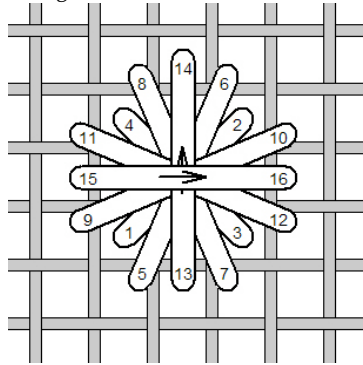


**Area:** Pink Stripe  
**Fibers:** Hyla's High Cotton  
 #902, #903  
**Stitch:** Tent

**Area:** Blue Dots  
**Fibers:** Petite Very Velvet  
 #V602; 1/16th" Ribbon #029L  
**Stitch:** Padded Rhodes  
 Step 1: Apply a Smyrna Cross  
 in the center using Petite Very  
 Velvet

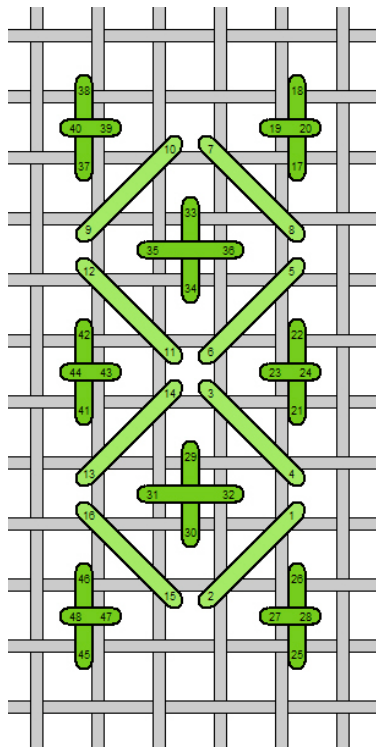


Step 2: Apply a Rhodes stitch  
 on top of the Smyrna Cross  
 using the 1/16th" ribbon



**Technique:** Apply beads with a  
 cross-stitch so the interior hole  
 lines up vertically.

**Area:** Green Stripe  
**Fibers:** Petite Silk Lame #SP36;  
 #8 Braid #015  
**Stitch:** Alicia's Lace Variation  
 Silk Lame is used for the  
 diagonal stitches, #8 braid is  
 used for the upright cross-  
 stitches.



**Area:** White Stripes  
**Fiber:** Magnifica #10009

All graphs included in this guide are  
 to illustrate the direction and/or  
 rhythm of a stitch. They may not  
 necessarily represent the painted  
 area of a design, and compensation  
 will be necessary in most areas.