

Associated Talents, Inc.
Candy Corn Ball Ornament #EE-1203



Supply List

Associated Talents, Inc.
EE-1203

Kreinik
#8 Braid
#3215 Peridot
#12 Braid
#202HL Aztec Gold Hi Lustre

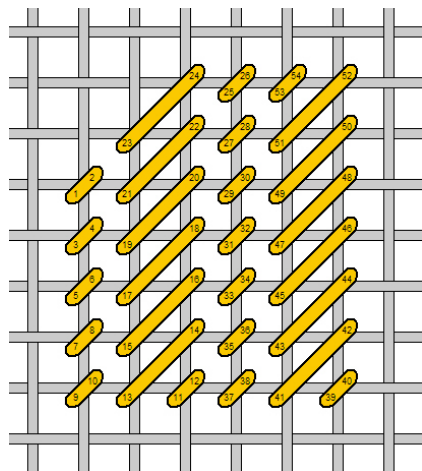
Mill Hill
Magnifica
#10002 Autumn Flame
#10083 Orange Sherbet

Miyuki Corporation
11/0 Delica
#DB233 Lined Crystal Yellow
#DB651 Dyed Opaque Squash
#DB635 Crystal Silk Satin
#DB1111 Transparent Gray Mist

Associated Talents, Inc.

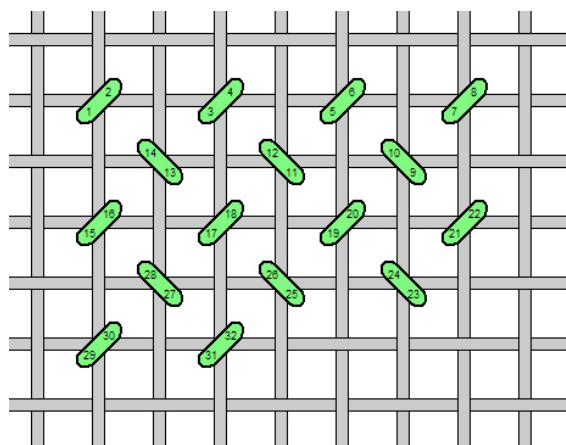
Candy Corn Ball Ornament #EE-1203

Area: Ornament Cap
Fiber: #12 Braid #202HL
Stitch: Tent with Cashmere



- When covering a horizontal thread, come back up in the upper left hand hole, go through the bottom of the bead (the end nearest the lower left hand hole), and then go back down in the lower right hand hole. This will “pull” the bead into a horizontal position.
- Moving just like basketweave, continue to apply any beads covering horizontal threads in that diagonal row.
- When covering a vertical thread, follow the first step. For the second step, come up in the lower right hand hole, go through the bottom of the bead (again, the end nearest the lower left hand hole,) and then go back down in the upper left hand hole. This will “pull” the bead into a vertical position.
- Moving just like basketweave, continue to apply beads covering vertical threads in that diagonal row.
- You do not need to change the color of your beading thread as the color of the design changes, just change the color of the bead you apply.

Area: Background
Fiber: #8 Braid #3215
Stitch: T Stitch



Area: Candy Corn
Beads: Magnifica #10002, #10083; 11/0 Delica #DB233, #DB635, #DB651, #DB1111
Technique: Basketweave Beading

- The first step, regardless of whether you are covering a horizontal or a vertical canvas thread is to come up in the lower left hand hole, go through the bead, then back down in the upper right hand hole. This is a classic tent stitch. The bead will slant from the lower left to the upper right, just like the stitch.

All graphs contained in this guide are for reference only and may not exactly match the painted canvas. Appropriate compensation may be necessary.

In the event any beads and/or embellishments are discontinued, make appropriate substitutions.