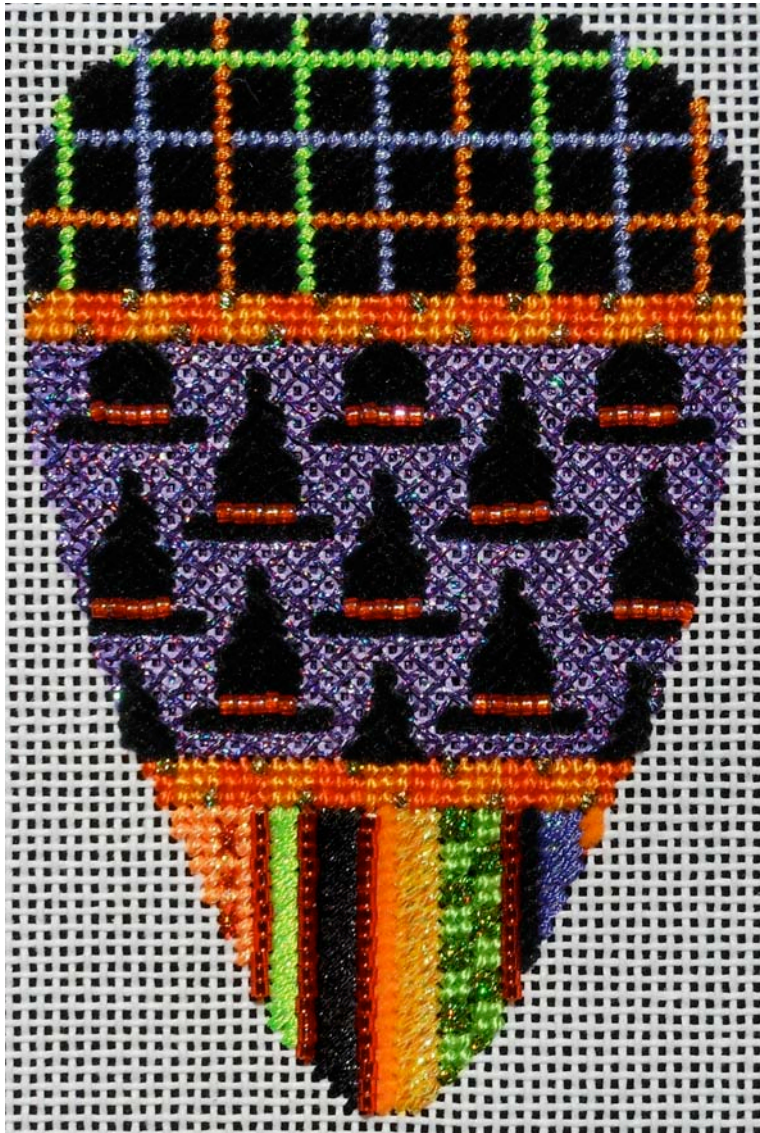


Associated Talents, Inc.

Patterned Candy Corn EE-907



Supply List

Associated Talents
EE-907

Kreinik

#8 Braid #012L, #027L
#12 Braid #5765,
1/16th Ribbon #002L, #015L

Mill Hill

Magnifica Beads #10038,
#10002

Rainbow Gallery

Fyrewerks #FT11, #F51

Petite Sparkle Rays #PS02,
#PS42, #PS43, #PS77
Petite Very Velvet #V601, #V629

Vineyard Silk

Classic #C-026, #C-060, #C-199

Area: Single Lines in Plaid

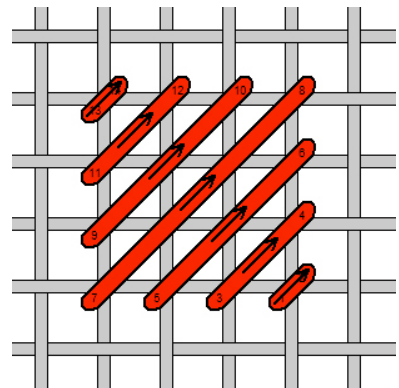
Fibers: Petite Sparkle Rays
#PS02, #PS42, #PS77

Stitch: Tent

Area: Black Squares

Fiber: Petite Very Velvet #V601

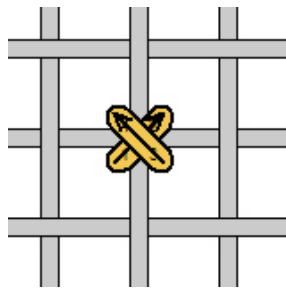
Stitch: Scotch



Associated Talents, Inc.

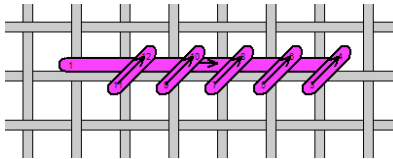
Patterned Candy Corn EE-907

Area: Orange Borders
Fibers: Vineyard Silk #C-025, #C-199
Stitch: Tent



Area: Gold Dot in Borders
Fiber: 1/16th Ribbon #002L
Stitch: Cross Stitch

Area: Hat Brim
Fiber: Petite Very Velvet #V601
Stitch: Padded Tent



Area: Hat Band
Fiber: Magnifica Beads #10083
Technique: Apply beads with a cross stitch so the hole lines up horizontally.

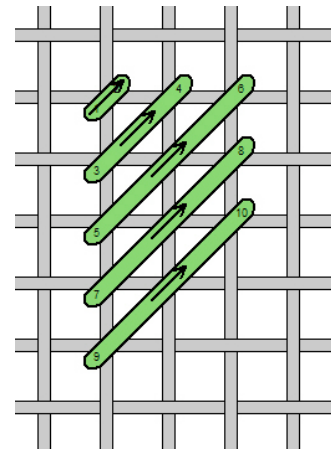
Area: Light Orange Stripe
Fiber: #12 Braid #5765
Stitch: Tent

Area: "Dots and Dashes" on Light Orange Stripe
Fiber: #8 Braid #027L
Stitch: Cross Stitch and Elongated Cross Stitch

Area: Dark Orange Stripes
Fiber: Magnifica Beads #10002
Technique: Attach beads with a cross stitch so the hole lines up vertically.

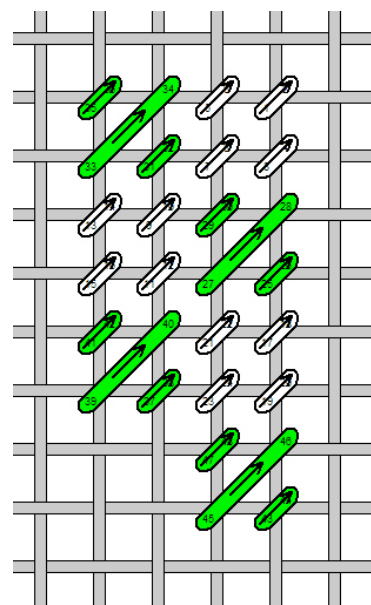
Area: Lime Green Stripe
Fiber: Petite Sparkle Rays #PS02
Stitch: Diagonal Satin

Area: Black, Purple, and Yellow Wide Stripes
Fibers: Fyre Werks #FT11, #F51, Petite Sparkle Rays #PS43
Stitch: Diagonal Satin

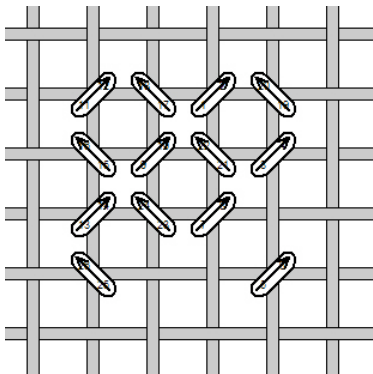


Area: Orange and Black Single Row Lines
Fibers: Petite Very Velvet #V601, #V629
Stitch: Tent

Area: Green Checkerboard
Fibers: 1/16th Ribbon #015L, Vineyard Silk #C-060
Stitch: Mosaic Checkerboard



Area: Purple Ground
Fiber: #8 Braid #012L
Stitch: Reversing Skip Tent



Area: Hat
Fiber: Petite Very Velvet #V601
Stitch: Fern Variation

