

# Associated Talents, Inc.

## Plaid/Carrots/Dots Carrot EM-133

### Supply List

*Associated Talents*  
EM-133

*Caron Collection*  
Impressions #3013

*DMC Corporation*  
Memory Thread #6110

*Kreinik*  
#12 Braid #005, #006, #015,  
#684, #9200  
#16 Braid #015

*Mill Hill*  
Magnifica #10002, #10009,  
#10057, #10065, #10083

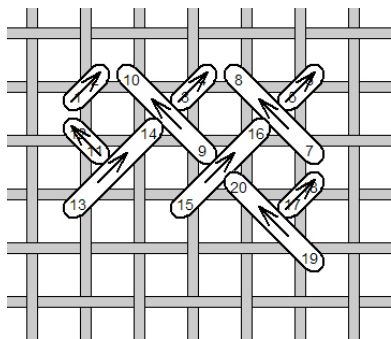
*Needlepoint Inc.*  
Silk #482, #493

*Rainbow Gallery*  
Fuzzy Stuff #FZ17  
Grandeur #G828, #829  
Soft Sheen Fireworks #FT19  
Splendor #S828, #S1016  
Wisper #W60, #W88

*Renaissance Designs*  
Sprinkles #27

*Swarovski*  
Hot-fix Crystal SS12, Crystal

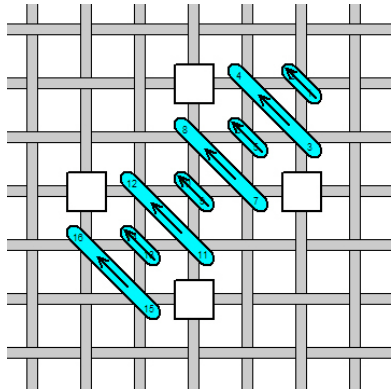
**Area:** Ground  
**Fiber:** Impressions #3013 (1 ply)  
**Stitch:** Woven



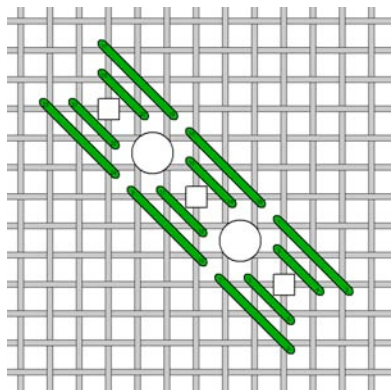
# Associated Talents, Inc.

## Plaid/Carrots/Dots Carrot EM-133

**Area:** Blue Picot Edge Ribbons  
**Fibers:** Soft Sheen Fyrewerks #FT19, Magnifica #10065  
**Stitch:** Diagonal Mosaic



**Area:** Green w/ Dots Ribbon  
**Fibers:** Grandeur #G828, #829, Magnifica #10013, Hot-fix Crystal  
**Stitch:** Broken Scotch Border



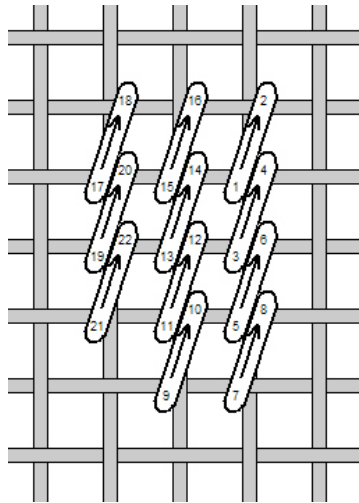
*Apply bead as indicated by the square, Hot-fix as indicated by the circle.*

**Area:** Bunny Ribbon Edge  
**Fibers:** Memory Thread #6110, 2ply Needlepoint Inc. Silk #482  
**Technique:** Couched

- Open up the hole at the beginning and end of the run.
- Plunge the Memory Thread to the back and anchor.
- Couch in place, then plunge to the back, and anchor.

**Area:** Bunny Ribbon Ground  
**Fiber:** Sprinkles #27  
**Stitch:** Basketweave

**Area:** Bunny  
**Fibers:** Wisper #W60, #W88  
**Stitch:** Encroaching Goeblin



*Blend the white and gray for shading.*

**Area:** Nose and Ears  
**Fiber:** #12 Braid #9200  
**Stitch:** Ears-Tent, Nose-French Knot

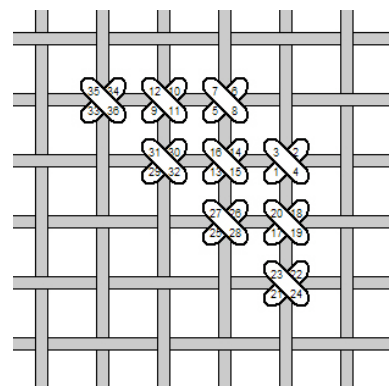
**Area:** Eyes  
**Fiber:** #12 Braid #005  
**Stitch:** Cross Stitch

**Area:** Carrot Ribbon Edge  
**Fibers:** #16 Braid #015, #12 Braid #015  
**Technique:** Couched

**Area:** Carrot Ribbon Ground  
**Fiber:** 4ply Needlepoint Inc. Silk #482, #493  
**Stitch:** Basketweave

**Area:** Carrots  
**Fibers:** Magnifica #10083, #10002, #10057  
**Technique:** Basketweave Beading

- Starting in the upper right corner stitch, come up in the lower left hole, go through the bead, and back down in the upper right hole. The bead will now have a diagonal slant.
- If covering a **horizontal** thread, come back up in the upper left hole, go back through the bottom of the bead (entering the end nearest the lower left hand hole), and go back down in the lower right hand hole. This will "pull" the bead into a horizontal position.
- If covering a **vertical** thread, come up in the lower left hole, go through the bead, then down in the upper right hand hole (just as for a horizontal thread.) Then come back up in the lower right hand hole, go back through the bottom of the bead, and go back down in the upper left hand hole. This will "pull" the bead into a vertical position.
- You will move in the same manner as basketweave, on the diagonal rows.
- The graph illustrates the direction of the cross stitches, as well as the movement between beads.



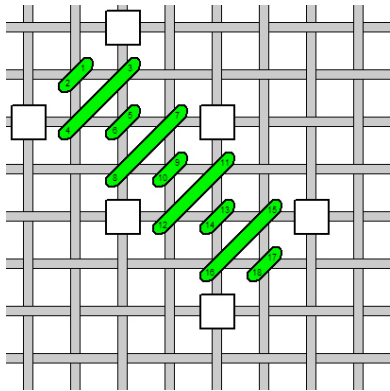
# Associated Talents, Inc.

## Plaid/Carrots/Dots Carrot EM-133

**Area:** Carrot Tops  
**Fiber:** Fuzzy Stuff #FZ17  
**Stitch:** French Knots

**Area:** Blue Striped Ribbon  
**Fibers:** #12 Braid #032, #006,  
#684  
**Stitch:** Tent

**Area:** Green Picot Edge Ribbon  
**Fibers:** Splendor #1016, #828,  
Magnifica #10058  
**Stitch:** Diagonal Mosaic



**Area:** Blue Picot Edge Ribbon  
**Fibers:** Soft Sheen Fyre Werks  
#FT19, #12 Braid #006,  
Magnifica #10009  
**Stitch:** Reverse Diagonal Mosaic

