

Associated Talents, Inc.  
HE-1002 Chevron/Coin Dot/Tattersall Heart



**Supply List**

**Associated Talents, Inc.**  
HE-1002

**the collection**  
*Braided Beading Thread*  
Crystal

**Kreinik Corporation**  
*1/16th" Ribbon*  
#003 Red  
#5505 Red Pepper  
#5760 Marshmallow  
  
#8 Braid  
#5760 Marshmallow

**Mill Hill**  
*Magnifica Beads*  
#10052 Fuchsia Opal  
*(Please note, Magnifica beads come in either 2 gram boxes or 7 gram boxes. If purchasing 2 gram get two, if purchasing 7 gram box {#11052} get one.)*

**Needlepoint Inc.**  
*8 Ply Silk*  
#493 Ice Blue Range  
#502 Chinese Red Range  
#682 Hot Pink Range

# HE-1002 Chevron/Coin Dot/Tattersall Heart

## Rainbow Gallery

Petite Sparkle Rays

#PS35 Aqua

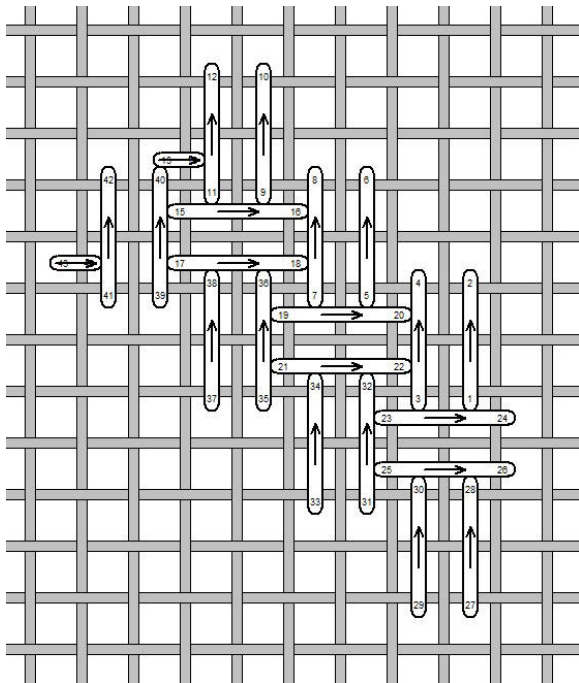
Petite Very Velvet

#V602 White

**Area:** White of Chevron

**Thread:** #8 Braid #5760

**Stitch:** Lazy Roman 2

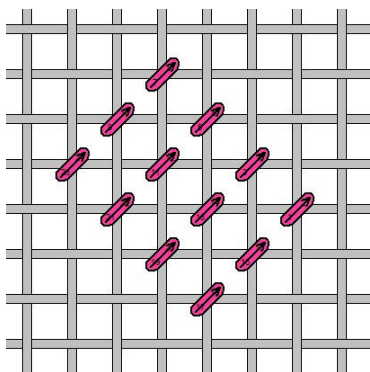


**Area:** Pink of Chevron

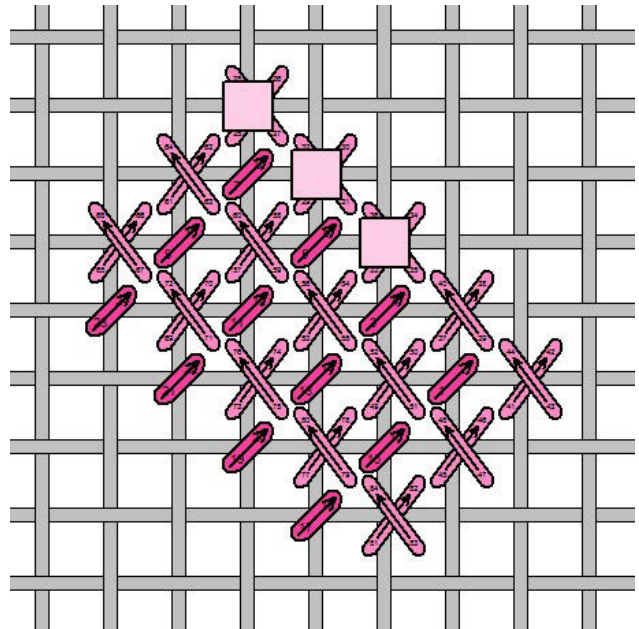
**Threads/Beads:** 4ply Needlepoint Inc. Silk #682, Magnifica #10052 (#11052), Braided Beading Thread

**Stitch:** Skip Tent Beading

*Step 1: Skip Tent with Silk*



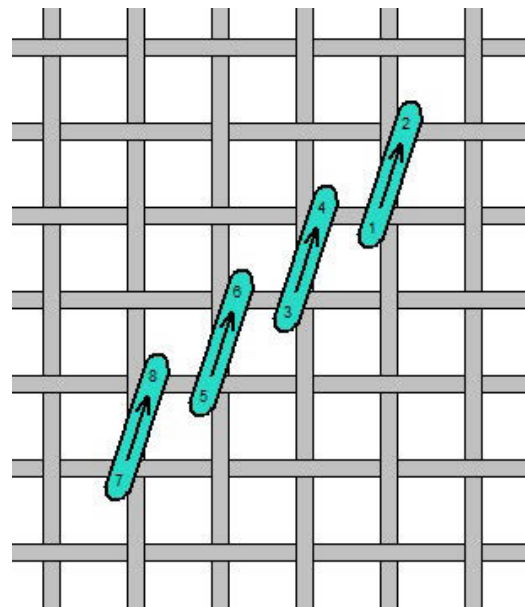
*Step 2: Apply Beads with a Cross-Stitch (so that the hole of the bead lies vertically) on the open stitches.*



**Area:** Aqua Border

**Thread:** Petite Sparkle Rays #PS35

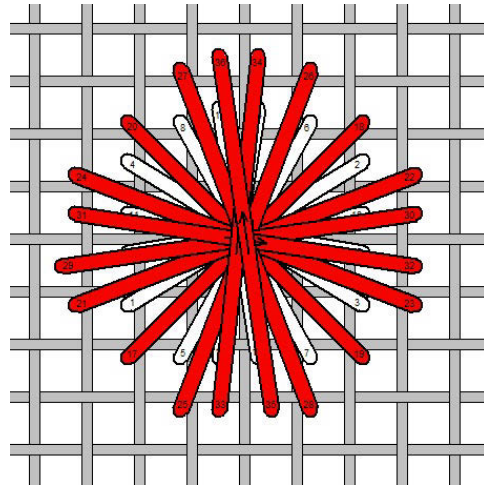
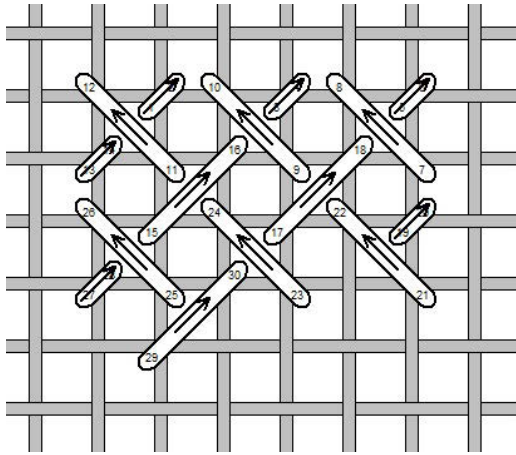
**Stitch:** Encroaching Goeblin Diagonal Border



# HE-1002 Chevron/Coin Dot/Tattersall Heart

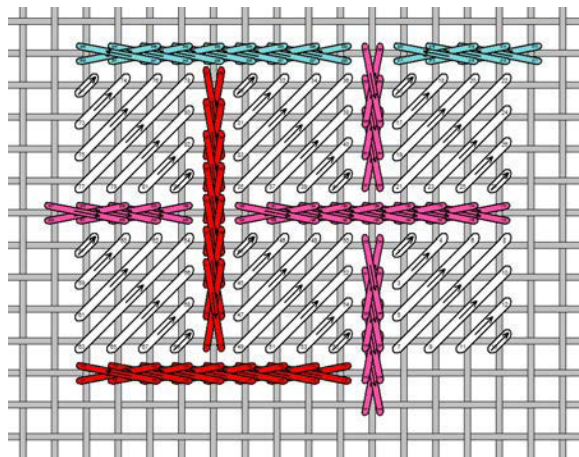
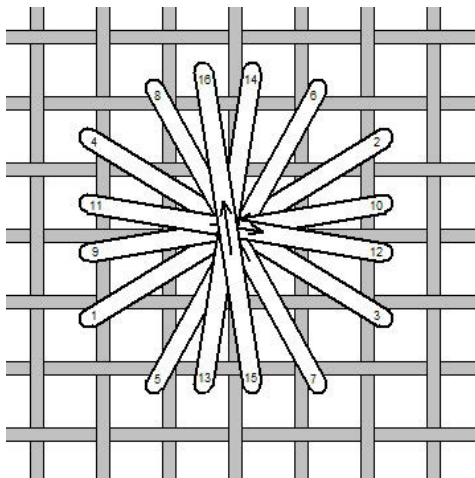
**Area:** White Ground  
**Thread:** #8 Braid #5760  
**Stitch:** Woven Stitch

*Step 2-Using 1/16th" Ribbon, alternating #003 and #5505*



**Area:** Red Coin Dots  
**Threads:** 1/16th" Ribbon #003, #5505, Petite Very Velvet #V602  
**Stitch:** Padded Rhodes Variation  
*Step 1-Using Petite Very Velvet*

**Area:** Tattersall  
**Threads:** 1/16th" Ribbon #5760, 2ply Needlepoint Inc. Silk #493, #502, #682  
**Stitch:** Scotch with Encroaching Elongated Cross Stitch



*Graphs are for representation of the rhythm of a stitch, and may not fit the specific, painted area. Unless otherwise instructed, the stitches should be compensated to fit the painted area, appropriately.*

*Appropriate substitutions should be made for any beads and/or embellishments that may have been discontinued.*