

# Associated Talents, Inc

## LM-152 Candy Cane Mouse



### ***Supply List:***

**Associated Talents**

LM-152

**Kreinik, Mfg**

#8 Braid 094

1/16th" Ribbon #9200

**Miyuki Corporation**

11DB152, 237

**Rainbow Gallery**

Neon Rays Plus NP26, NP118

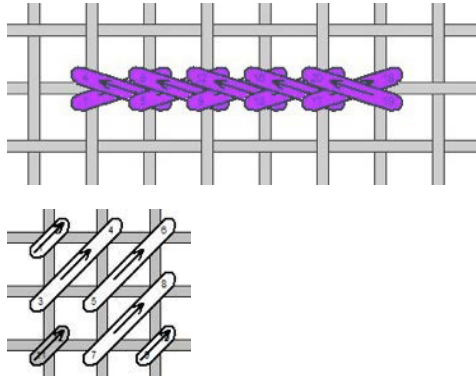
Soft Sheen Fyre Werks #F10, FT35, Splendor S1005

**Area:** Checkered Ear

**Threads:** #8 Braid 094, Soft Sheen

Fyre Werks #F10, Splendor S1005

**Stitches:** Elongated Cross, Scotch Fill with Tent Dot



**Area:** Pink Ear

**Threads:** 1/16th" Ribbon #9200

**Beads:** 11DB152, 237

**Stitches:** Skip Tent, Straight Line Beading

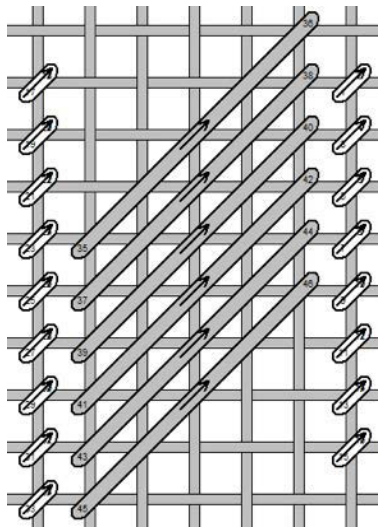
**Technique:** Apply beads with a cross stitch so the holes line up horizontally.

**Area:** Candy Canes

**Threads:** Neon Rays Plus NP26, NP118

Soft Sheen Fyre Werks FT10, FT30

**Stitches:** Framed Diagonal Satin



**Area:** Blue

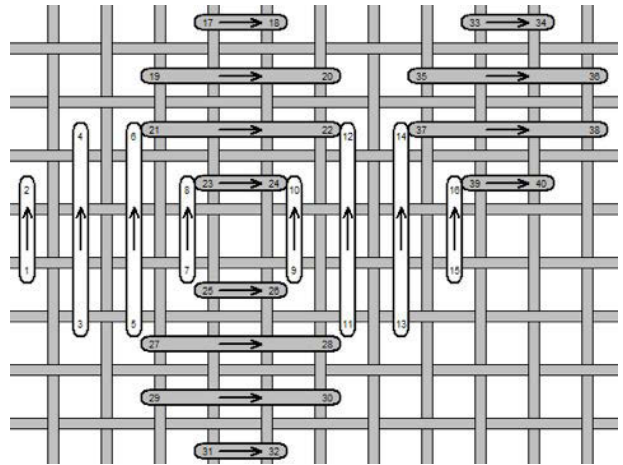
Body

**Threads:** 1/16th" Ribbon #9400

**Beads:** 11DB152

**Stitches:** Hungarian Variation

note: Bead is positioned in center of



square formed by stitch

**Area:** Background Surround

**Thread:** Splendor #S1005

**Stitch:** Basketweave

*At the time this stitch guide was written, all threads and embellishments were available. In the event a thread or embellishment is discontinued, any similar material may be substituted with no negative effect on the finished product.*

*All graphs included in this guide are to illustrate the direction and/or rhythm of a stitch. They may not necessarily represent the painted area of a design, and compensation will be necessary in most areas.*

*Copyright Associated Talents, Inc. 2015*